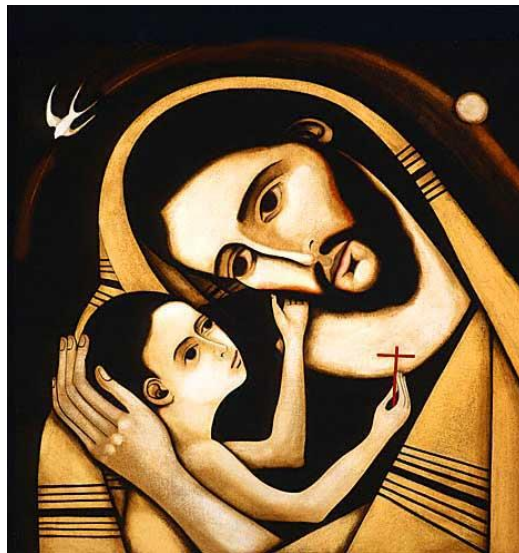




St. Joseph's Catholic Primary School Clydach



Community Links Policy

Date of Review: July 2021

Signature:

School Mission Statement

‘Together in Christ – Living, Learning and Growing.’

At St. Joseph’s Primary School, we value the importance of developing strong links between the school, the Church and local, regional and national communities. Within Citizenship education, we involve our pupils in the local community, so that they learn how to participate in a practical way in the life and concerns of their neighbourhood and communities. Working with parents, the Church, local residents, the business community, public services, and voluntary services teaches the children to become active citizens.

Aims

- ◆ To help children today to prepare for the future.
- ◆ For all of us to care about our school and the environment.
- ◆ For our children, our parents and our staff all to work together.
- ◆ To acknowledge that our neighbours are important to us.
- ◆ To accept that St. Joseph’s Primary School is not a building in isolation, but is situated within the community. It is important that St. Joseph’s Primary School, its children, staff and governors are recognised as part of the local and wider community.
- ◆ To develop links with:
 - Parents
 - Church
 - local Primary schools
 - Secondary schools
 - pre-school groups
 - the press
 - industry and businesses
 - other agencies
 - voluntary/charitable organisations.

Parents

The ‘open door’ policy at St. Joseph’s Primary School encourages parents’ interest in their child’s education and in school life as an adult helper or member of the Friends of St. Joseph’s. We recognise that parents are our principal contact with the local community. They communicate what is happening in our school to the wider community, as well as promoting St. Joseph’s Primary School’s reputation. The Headteacher liaises with parents and friends, and co-ordinates their help.

It is a policy of St. Joseph’s Primary School to remind parents regularly about parking restrictions on site, in an attempt to alleviate this problem.

Local Primary Schools

It is essential to develop links with other local Primary schools. This is done through:

- ◆ sporting events
- ◆ informal contacts
- ◆ cluster INSET
- ◆ meetings.

The Head Teacher, CPD, Transition and PE Co-ordinators are responsible for these links as appropriate, although other staff are involved from time to time.

Secondary Schools

At St. Joseph’s Primary School, we feel it is important to develop links with our Catholic Secondary schools and our local Secondary school for two reasons:

- ◆ to ease the transition from Year 6 to Year 7
- ◆ smoother transition for our pupils

- ◆ to develop subject links between co-ordinators.

The Year 6 teacher plays a major role in transition arrangements. The Year 6 teacher instigates links with our Secondary schools, covering a range of subjects and skills across the school. This is part of the partnership that St. Joseph's Primary School is developing with Secondary schools. We benefit from subject expertise when needed. They benefit from being involved in differentiated group activities and classroom presentation.

Pre-school

At St. Joseph's Primary School, we have a Foundation Phase Co-ordinator who liaises with parents of pre-school children, nurseries and playgroups. This is a vital role, as it helps the school establish a good relationship with many pre-school groups. We can find out about children, who might be coming to the school and, early on, develop a good relationship with those children and their parents.

Press

The Head Teacher is responsible for contact with the local press. This involves notifying the local paper of special events and activities taking place at St. Joseph's Primary School, communicating whatever information is required. This liaison celebrates our school's achievements, and establishes a good relationship with the local press.

Industry/Businesses

The school often initiates contacts with local industries and businesses. These are linked, wherever possible, to curriculum topics. Visitors from industry are invited into school, or visits arranged to local businesses.

Through the development of business links and visits, the children at St. Joseph's Primary School begin to understand the way the world of work functions. This understanding can be extended through role-play linked to topics at Foundation Phase.

At Key Stage 2, the teachers are responsible for organising events with the local community.

Other Agencies

We feel it is crucial at St. Joseph's Primary School to consolidate links with other people, who support, or work in or with, the school. These include:

- ◆ Health Service Personnel
- ◆ Educational Welfare Officer
- ◆ Road Safety Officer
- ◆ Police
- ◆ Educational Psychologist
- ◆ Staff from other schools
- ◆ Local Education Offices
- ◆ Social Services.

These links vary from time to time depending upon need and circumstance.

St. Joseph's Primary School is a community that is part of a wider community, and the links we forge with that wider community help to strengthen and support the education we provide for all children.

Voluntary work

At St. Joseph's Primary School, we value the voluntary contributions the children can make. The School Council/ Eco Committee are included in deciding which charities and voluntary organisations the school will support and also a new group called The Young Apprentices. Throughout the year, the children take part in sponsored and other activities to raise funds for charities

Equal Opportunities

As part of our overarching aim for pupils to fulfil their full potential across the curriculum we will endeavour to ensure that all children are given the necessary support to access learning in this area in line with our equal opportunity and disability scheme.

Child Protection - The United Nations Convention on the Rights of the Child (CRC)

is at the heart of our school's planning, policies, practice and ethos.

As a rights- respecting school we not only teach about children's rights but also model rights and respect in all relationships – Linked to Articles 3, 16, 19, 20, 21, 25, 27, 28, 34, 36, 39 (CRC)



