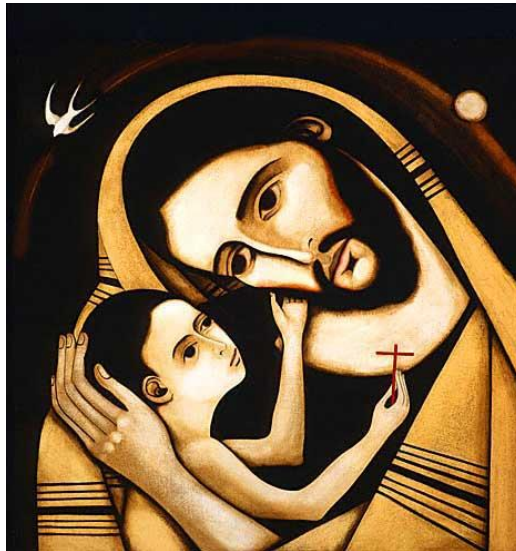




St. Joseph's Catholic Primary School Clydach



Charging Policy

Date of Review: November 2019

Signature:

CHARGING POLICY

School Mission Statement

‘Together in Christ – Living, Learning and Growing.’

Introduction

The school follows the County policy in respect of charging and remissions. In accordance with the Education Reform Act the school does not charge for the provision of education and charges are only made for activities which occur outside school session times.

Voluntary contributions

When organising school trips or visits which enrich the curriculum and educational experience of the children, the school invites parents to make a contribution towards the cost of the trip. All contributions are voluntary. The school will not exclude any child from an educational or social visit on financial grounds. Such visits may however be jeopardised if there are insufficient contributions from parents.

If a parent wishes their child to take part in a school trip or event, but is unwilling or unable to make a voluntary contribution, the child is allowed to participate fully in the trip or activity. Sometimes the school pays additional costs in order to support the visit. Parents have a right to know how each trip is funded. The school will provide this information on request.

The following is a list of additional activities organised by the school, which require voluntary contributions from parents. The list is not exhaustive:

- Visits to museums.**
- Sporting activities which require transport expenses.**
- Outdoor adventure activities.**
- Visits to the theatre.**
- School trips.**
- Musical events.**

Residential visits

If the school organises a residential visit in school time or mainly school time, which is to provide education directly related to the National Curriculum, we do not make any charge for the education. However, we do make a charge to cover the costs of board, lodging and travel expenses. These trips are offered on the basis of parental choice and a willingness to meet such charges. Reduced charges may be available for children whose parents receive certain state benefits. Parents who are experiencing financial difficulty are invited to write or speak in confidence to the head teacher.

Music tuition

All children study music as part of the normal school curriculum. No charge is made for this.

Peripatetic music teachers teach small groups of pupils. No charge is made for this apart from hiring instrument and music book.



Child Protection - The United Nations Convention on the Rights of the Child (CRC) is at the heart of our school's planning, policies, practice and ethos.

As a rights- respecting school we not only teach about children's rights but also model rights and respect in all relationships – Linked to Articles 3, 16, 19, 20, 21, 25, 27, 28, 34, 36, 39 (CRC)

