



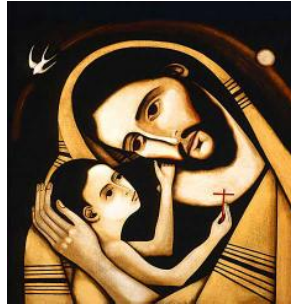
# St Joseph's Catholic Primary School



**Headteacher:**  
**Mrs. Juliet Stack**

**☎ (01792) 842494**  
**Fax: (01792) 843721**

**Pontardawe Road**  
**Clydach**  
**Swansea**  
**SA6 5NX**



Dear Parents,

As you know our school participates in the Relationship Education programme for Catholic primary schools, titled **Life to the Full**.

As you may be aware, Relationship Education became statutory for all primary schools from September 2020. We have updated our RSE Policy and would like you to read a draft copy of it. This can be found on our school website under the RE Curriculum under the RSE Section.

The **Life to the Full** programme is based on 'A Model Catholic RSE Curriculum' by the Catholic Education Service which was highlighted as a work of good practice by the Department of Education. **Life to the Full** is much more than a series of lessons. It is an entire platform of creative resources that will engage, inform and inspire our children and, indeed, you as parents. This includes interactive video content, story-based activities, employing a wide range of teaching tools, original worship music and an accompanying programme of classroom prayers.

In addition there is an online parent platform so that you, as parent and carers, can engage with the teaching and deepen the experience for your child. To access the online parent platform please visit: **[www.tentenresources.co.uk/parent-portal](http://www.tentenresources.co.uk/parent-portal)**

**School Username: st-joseph-sa6**

**School Password: ponty-65**

## Programme Structure

In Life to the Full, we will be following a three-stage structure which is repeated across three different learning stages:

- ☐ Key Stage One is aimed at Years 1 and 2\*
- ☐ Lower Key Stage Two is aimed at Years 3 and 4
- ☐ Upper Key Stage Two is aimed at Years 5 and 6

Within each learning stage, there are three modules which are based on the Model Catholic RSE Curriculum:

- ☐ Created and Loved by God
- ☐ Created to Love Others
- ☐ Created to Live in Community

---

**E-Mail : [St.Josephs.RCPrimary.School@swansea-edunet.gov.uk](mailto:St.Josephs.RCPrimary.School@swansea-edunet.gov.uk)**

**School Website : <http://www.stjosephscatholicps-swansea.co.uk/>**



Each Module is then broken down into Units of Work.

Module 1	Created and Loved by God
Units	Religious Understanding Me, My Body, My Health Emotional Well-Being Life Cycles
Module 2	Created to Love Others
Units	Religious Understanding Personal Relationship Keeping Safe
Module 3	Created to Live in Community
Units	Religious Understanding Living in the Wider World

### Programme Content

The programme adopts a spiral curriculum approach so that as your child goes through the programme year-after-year, the learning will develop and grow, with each stage building on the last.

#### **Module One: Created and Loved by God**

Module One: Created and Loved by God explores the individual. Rooted in the teaching that we are made in the image and likeness of God, it helps children to develop an understanding of the importance of valuing themselves as the basis for personal relationships.

In these sessions, we explore:

**Key Stage One** – that we are uniquely made by a loving God, that we have differences and similarities (including physical differences between boys and girls), key information about staying physically healthy, understanding feelings and emotions, including strong feelings such as anger, and the cycle of life from birth to old age.

**Lower Key Stage Two** – understanding differences, respecting our bodies, **puberty and changing bodies (recommended for Year 4+)**, strategies to support emotional wellbeing including practicing thankfulness, and the development of pupils understanding of life before birth.

**Upper Key Stage Two** – appreciation of physical and emotional differences, a more complex understanding of physical changes in girl and boys bodies, body image, strong emotional feelings, the impact of the internet and social media on emotional well-being, a more nuanced and scientific understanding of life in the womb **and how babies are made**, and menstruation.

#### **Module Two: Created to Love Others**

Module Two: Created to Love Others explores the individual's relationship with others. Building on the understanding that we have been created out of love and for love, this unit explores how we take this calling into our family, friendships and relationships, and teaches strategies for developing healthy relationships and keeping safe.

This religious understanding is then applied to real-world situations relevant to the age and stage of the children:

---

**E-Mail :** [St.Josephs.RCPrimary.School@swansea-edunet.gov.uk](mailto:St.Josephs.RCPrimary.School@swansea-edunet.gov.uk)

**School Website :** <http://www.stjosephscatholicps-swansea.co.uk/>



**Key Stage One** – In the Unit 'Personal Relationships', children are taught to identify the Special People in their lives who they love and can trust, how to cope with various social situations and dilemmas, and the importance of saying sorry and forgiveness within relationships. In the Unit 'Keeping Safe', we explore the risks of being online by incorporating the 'Smartie the Penguin' resources from Childnet, the difference between good and bad secrets, and teaching on physical boundaries (incorporating the PANTS resource the NSPCC).

**Lower Key Stage Two** – The sessions here help children to develop a more complex appreciation of different family structures and there are activities and strategies to help them develop healthy relationships with family and friends; here, they are also taught simplified Cognitive Behavioral Therapy (CBT) techniques for managing thoughts, feelings and actions.

Once again, for the 'Keeping Safe' unit, there are some excellent NSPCC resources, as well as teaching on bullying and abuse through a series of animated stories.

**Upper Key Stage Two** – The sessions for UKS2 in the 'Personal Relationships' module aim to equip children with strategies for more complex experiences of relationships and conflict; this includes sessions that help children to identify and understand how to respond to spoken and unspoken pressure, the concept of consent and some practical demonstrations of this, and further teaching on how our thoughts and feelings have an impact on how we act.

### **Module Three: Created to Live in Community**

Finally, Module Three: Created to Live in Community explores the individual's relationship with the wider world. Here we explore how human beings are relational by nature and are called to love others in the wider community through service, through dialogue and through working for the Common Good.

In the first Unit, Religious Understanding, the story sessions help children to develop a concept of the Trinity.

In subsequent sessions, we apply this religious understanding to real-world situations, such as the community we live in, and through exploring the work of charities which work for the Common Good.

Life to the Full is intended to be partnership between home, school and church. We know that you already do a fantastic job and we see our new programme, Life to the Full, as a means to further develop, support and enrich the partnership between home, school and church so that your child is fully supported.

Yours sincerely

Mrs. Mary Mort  
RSE Co-ordinator

---

**E-Mail :** [St.Josephs.RCPrimary.School@swansea-edunet.gov.uk](mailto:St.Josephs.RCPrimary.School@swansea-edunet.gov.uk)

**School Website :** <http://www.stjosephscatholicps-swansea.co.uk/>

